



THE CORPORATION OF THE VILLAGE OF SLOCAN

P.O. BOX 50, SLOCAN, B.C. V0G 2C0

TELEPHONE (250) 355-2277

FAX (250) 355-2666

cao@villageofslocan.ca

ADDENDUM NO. 4

Issued: August 22, 2022

Slocan Curling Club Facility - Demolition
RFP-2022-03

Addendum No. 4 consists of questions raised during the mandatory pre-bid site meeting held on August 3, 2022.

Questions and Answers:

Q1. Has the ice plant refrigerant been drained, and what type of refrigerant was it?

A1. Yes. In January 2019, the Village procured a local refrigeration company to decommission the ice plant, and the refrigerant has been removed. R22 was the refrigerant type.

Q2. Is power still connected to the building?

A2. Power has been disconnected. June 8, 2016 email from Fortis BC: *"Power has now been disconnected at the Slocan Curling Rink. Overhead wires still remain for reconnection if need be one day."*

On August 12, 2022 the wires and meter were removed by Fortis BC, at the request of the Village.



In addition, the Village contacted Telus Communications for removal of the Telus phone wire to the building. The communications wire was confirmed disconnected by Telus on August 18, 2022.

Q2. There are a few trees on the property – one at the east end of the building, and several on the north side of the building. Are they to remain or be cut down?

A2. There are a minimal number of trees on the Curling Club property. The Village policy is to retain the trees where possible, but if the trees (and stumps) hinder progress of the demolition, they may be removed at the contractor's expense. In this case, please contact the CAO in advance to obtain the Village arborist's contact number.

a) Low-lying brush and seedling trees on the north side of the building:
(same group of trees in both photos – two views provided for reference)

View 1



View 2



b) One tree cluster on the east side of the building:
(same tree in both photos – two views provided for reference)

View 1

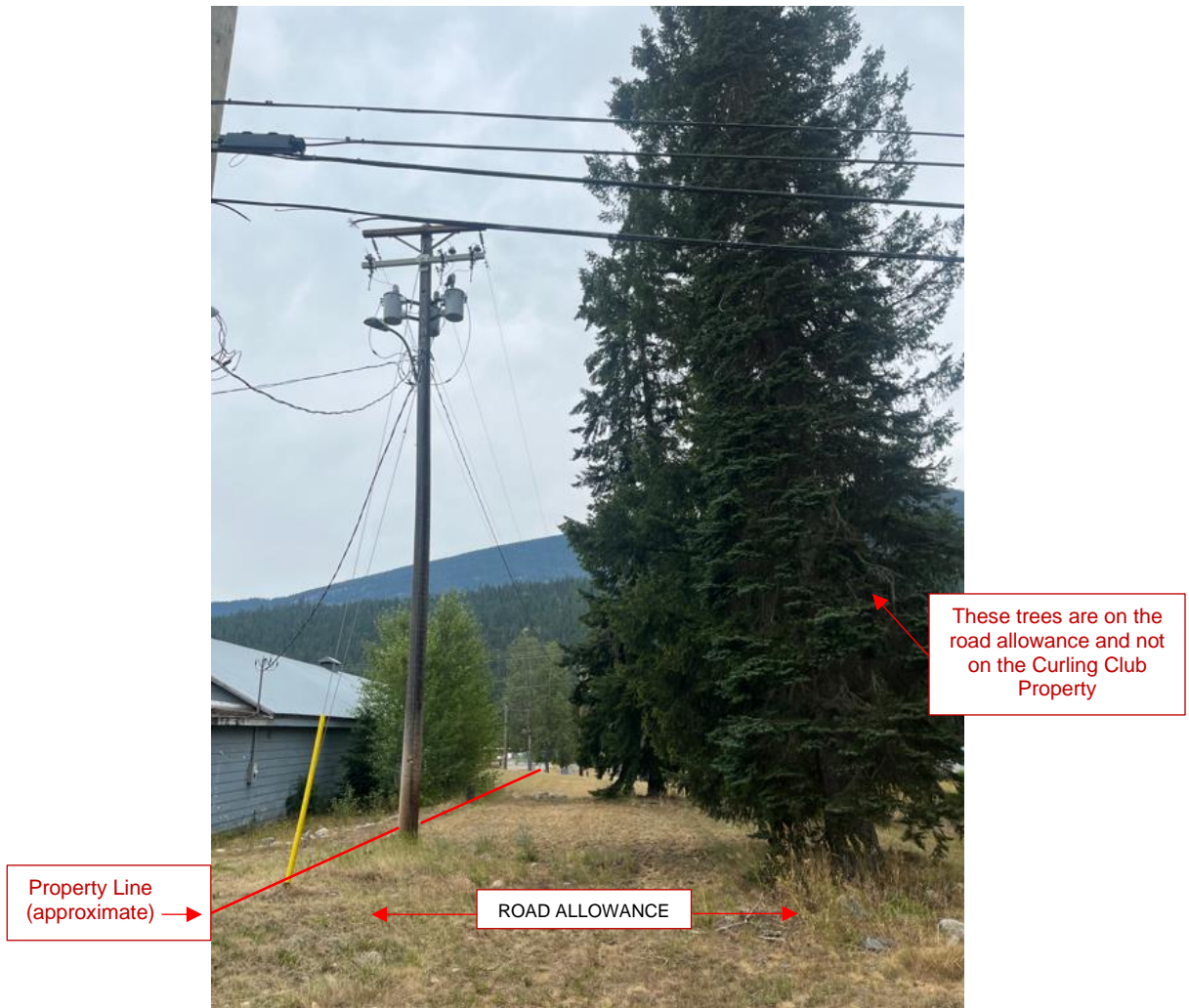


View 2



c) There are no trees present on the west or south sides of the building.

d) Road allowance



Q3: Does the sand in the Ice Sheet Area need to be removed or will it stay?

A3: The sand in the Ice Sheet Area can stay.

Q4: After the building is demolished and foundations removed, there may be a pit remaining. How would the Village like that filled?

A4: As stated in section 2.5(m) of the RFP document: *“The entire site must be kept secure during the work, and left in a bare land, graded, and safe condition at the end of the work.”* It is our hope that the excavation can be back-filled using the earth materials on-site. At this stage of the demolition project, the Proponent is to schedule a site meeting with the Village to discuss, prior to back-filling. It can then be decided if additional fill material is required to be brought in, at the Village’s expense.