

**Weed Be
Delighted**



Contents

- **License & Application**
- **Operation & Community Safety**
- **Our Brand**



License

OUR LICENSE

- Allows purchasing of approved product
- Allows retailing directly to consumers

THE BC LCRB

- Sets the rules and regulations
- Wholesaler

ENFORCEMENT

- The same governing body regulates both alcohol and cannabis
- Same protocols in place, IDing, inspections, etc.



Application Process



**FULL CORPORATE
AND FINANCIAL
DISCLOSURE**

**COMPLETE SITE
PLANS AND
SECURITY PLAN**

**CRIMINAL RECORD
AND SECURITY
SCREENING**



Operation

**TRAINED AND
KNOWLEDGEABLE STAFF**

**RELIABLE PRODUCT
INFORMATION**

**MEETING
CUSTOMERS NEEDS**

**CULTURE OF SAFE
CONSUMPTION**



EXPERIENCE

- **10+ years in controlled substance**
- **Proven track record**

KNOWLEDGE

- **Detailed understanding of regulations**
- **Long standing relationship with agencies**

LOCATION

- **Same location as existing controlled substance licenses**
- **Known culture and expectations**

COMMUNITY SAFETY

- **Selling it Right**
- **Restricting access to minors**
- **No cannabis use on site**





Community Benefits

CONVENIENT ACCESS

TO A VARIETY OF
PRODUCTS

WHILE SUPPORTING
LOCAL



Product Examples



MTL Cannabis

Sage N' Sour

Sativa

THC: 24.3% | CBD: 1.7%



Nuance

CBD Grapefruit Bath Bomb

High CBD

CBD: 100%





Foray

Pineapple Orange / Ananas et orange

2 Soft Chews / 2 Gomme tendres

THC per unit: <0.5 mg / THC par unité : <0,5 mg

(Total THC per unit: <0.5 mg / THC total par unité : <0,5 mg)

THC: <1 mg / THC : <1 mg

Total THC: <1 mg / THC total : <1 mg

CBD per unit: 10 mg / CBD par unité : 10 mg

(Total CBD per unit: 10 mg / CBD total par unité : 10 mg)

CBD: 20 mg / CBD : 20 mg

Total CBD: 20 mg / CBD total : 20 mg

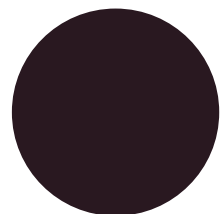
WARNING: Adolescents and young adults are at greater risk of harms from cannabis. Daily or near-daily use over a prolonged period of time can harm brain development and function.

MISE EN GARDE : Les risques d'effets nocifs du cannabis sont plus élevés chez les adolescents et les jeunes adultes. L'utilisation quotidienne ou presque quotidienne sur une période prolongée peut nuire au développement et au fonctionnement du cerveau.

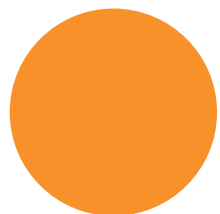




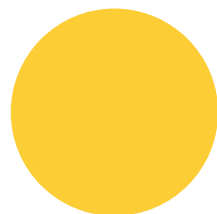
OUR BRAND



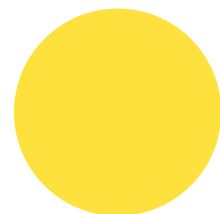
#291820



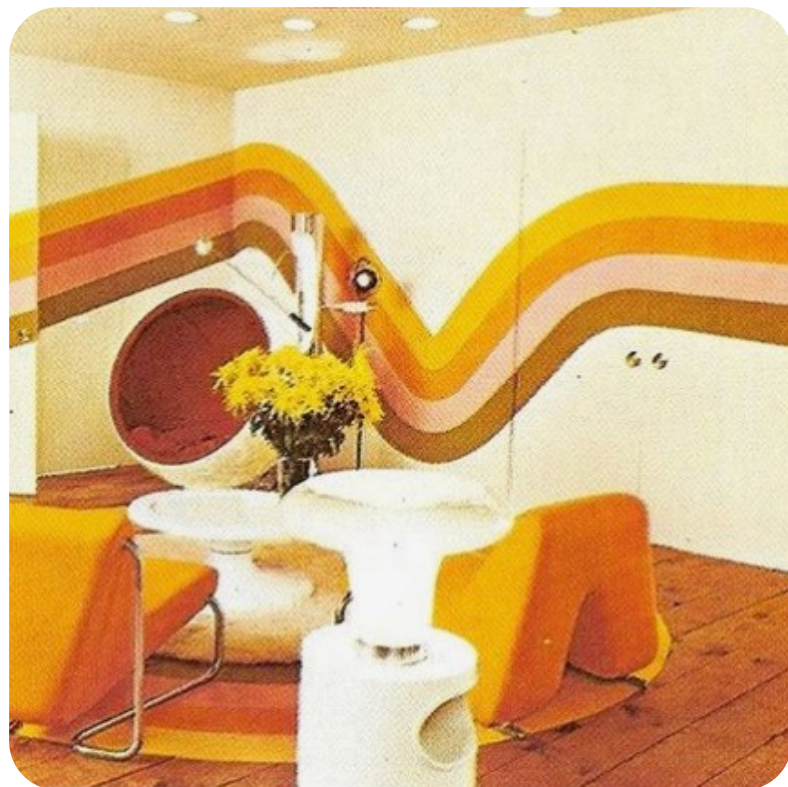
#F9912A



#FDCD36



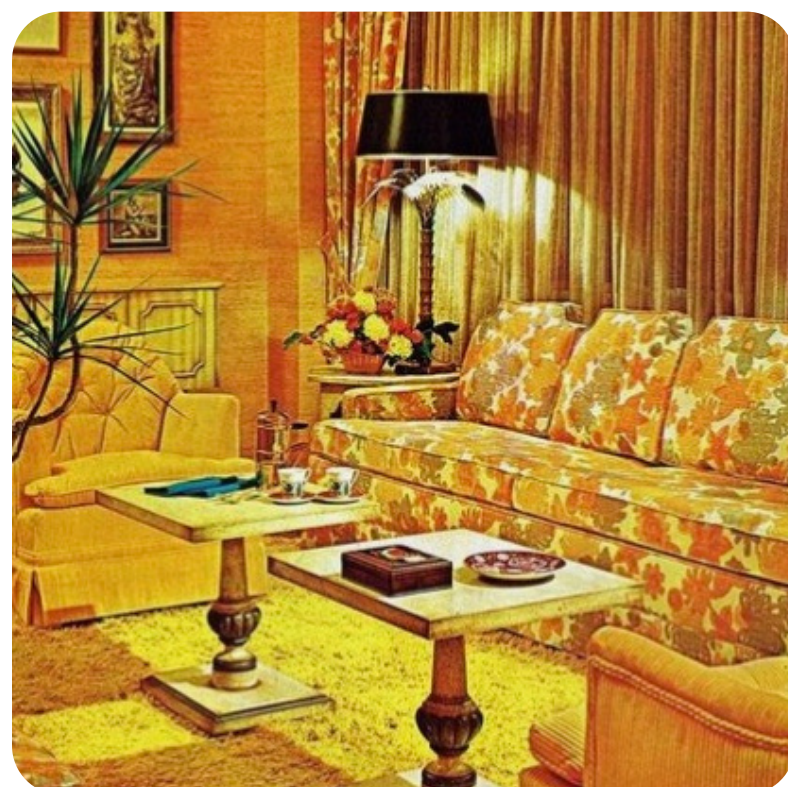
#FEE13C



SERVICE



LOOK AND FEEL



TOURISM



**Thank you for your
consideration**

